

## DSUB SV FESSDPANG73-284 09PPL3NUTSLK4-40

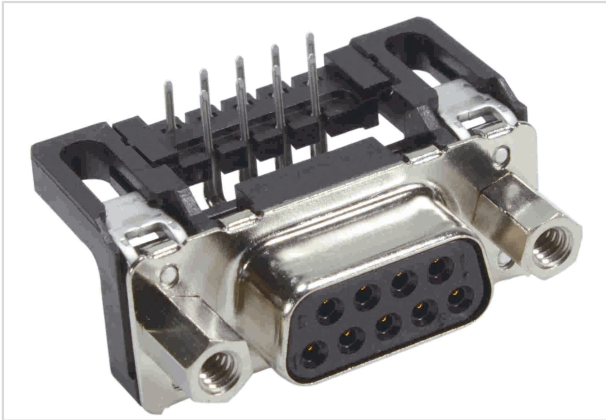


Image is for illustration purposes only. Please refer to product description.

|                    |   |
|--------------------|---|
| Part number        | 09 66 113 7603  |
| Specification      | DSUB SV FESSDPANG73-284<br>09PPL3NUTSLK4-40   |
| HARTING eCatalogue | <a href="https://b2b.harting.com/09661137603">https://b2b.harting.com/09661137603</a> |

### Identification

|                            |                   |
|----------------------------|-------------------|
| Category                   | Connectors        |
| Series                     | D-Sub             |
| Identification             | Standard          |
| Element                    | Connector         |
| Description of the contact | Stamped<br>Angled |

### Version

|                    |   |
|--------------------|---|
| Termination method | Wave soldering termination                    |
| Gender             | Female  |
| Size               | D-Sub 1                                       |
| Connection type    | Motherboard to daughtercard                   |
| Number of contacts | 9   |
| Termination length | 2.9 mm  |
| Locking type       | Fixing flange with fitted screw lock 4-40 UNC |

### Technical characteristics

|                                    |                     |
|------------------------------------|---------------------|
| Distance between rows              | 2.84 mm             |
| Contact spacing (termination side) | 2.74 mm             |
| Rated current                      | 6.5 A               |
| Clearance distance                 | ≥1 mm               |
| Creepage distance                  | ≥1 mm               |
| Insulation resistance              | >10 <sup>10</sup> Ω |



**Pushing Performance**  
 Since 1945

## Technical characteristics

|                                  |                        |
|----------------------------------|------------------------|
| Contact resistance               | ≤10 mΩ                 |
| Tightening torque                | ≤0.4 Nm Locking screw  |
| Limiting temperature             | -55 ... +125 °C        |
| Insertion force                  | ≤30 N                  |
| Withdrawal force                 | ≥3.3 N<br>≤20 N        |
| Performance level                | 3                      |
| Mating cycles                    | ≥50                    |
| Test voltage U <sub>r.m.s.</sub> | 1 kV                   |
| Isolation group                  | IIIa (175 ≤ CTI < 400) |
| PCB thickness                    | ≥1.6 mm                |
| Installation height              | 7.3 mm                 |
| Hot plugging                     | No                     |

## Material properties

|   |   |
|---|---|
| Material (insert)                         | Thermoplastic resin, glass-fibre filled (PBTP)<br>Shell: Plated steel |
| Colour (insert)                           | Black   |
| Material (contacts)                       | Copper alloy  |
| Surface (contacts)                        | Noble metal over Ni   |
| Material flammability class acc. to UL 94 | V-0   |
| RoHS                                      | compliant with exemption  |
| RoHS exemptions                           | 6(c): Copper alloy containing up to 4 % lead by weight                |
| ELV status                                | compliant with exemption  |
| China RoHS                                | 50  |
| REACH Annex XVII substances               | Not contained   |
| REACH ANNEX XIV substances                | Not contained   |
| REACH SVHC substances                     | Yes   |
| REACH SVHC substances                     | Lead  |
| ECHA SCIP number                          | ecef7555-f643-4ceb-a337-fc54762297f1                                  |
| California Proposition 65 substances      | Yes   |
| California Proposition 65 substances      | Antimony trioxide   |
| California Proposition 65 substances      | Lead  |
| California Proposition 65 substances      | Nickel  |



**Pushing Performance**  
Since 1945

## Material properties

|                                    |     |
|------------------------------------|-----|
| Requirement set with Hazard Levels | R26 |
|------------------------------------|-----|

## Specifications and approvals

|                |                       |
|----------------|-----------------------|
| Specifications | DIN 41652             |
| UL / CSA       | UL 1977 ECBT2.E102079 |

## Commercial data

|                                |                        |
|--------------------------------|------------------------|
| Packaging size                 | 100                    |
| Net weight                     | 8.72 g                 |
| Country of origin              | Romania                |
| European customs tariff number | 85366990               |
| GTIN                           | 5713140079991          |
| eCl@ss                         | 27440214 D-Sub coupler |